

*Reduces formwork time by 50%!
Autonomous. Efficient. Best results.*

Highlights PowerShield-System

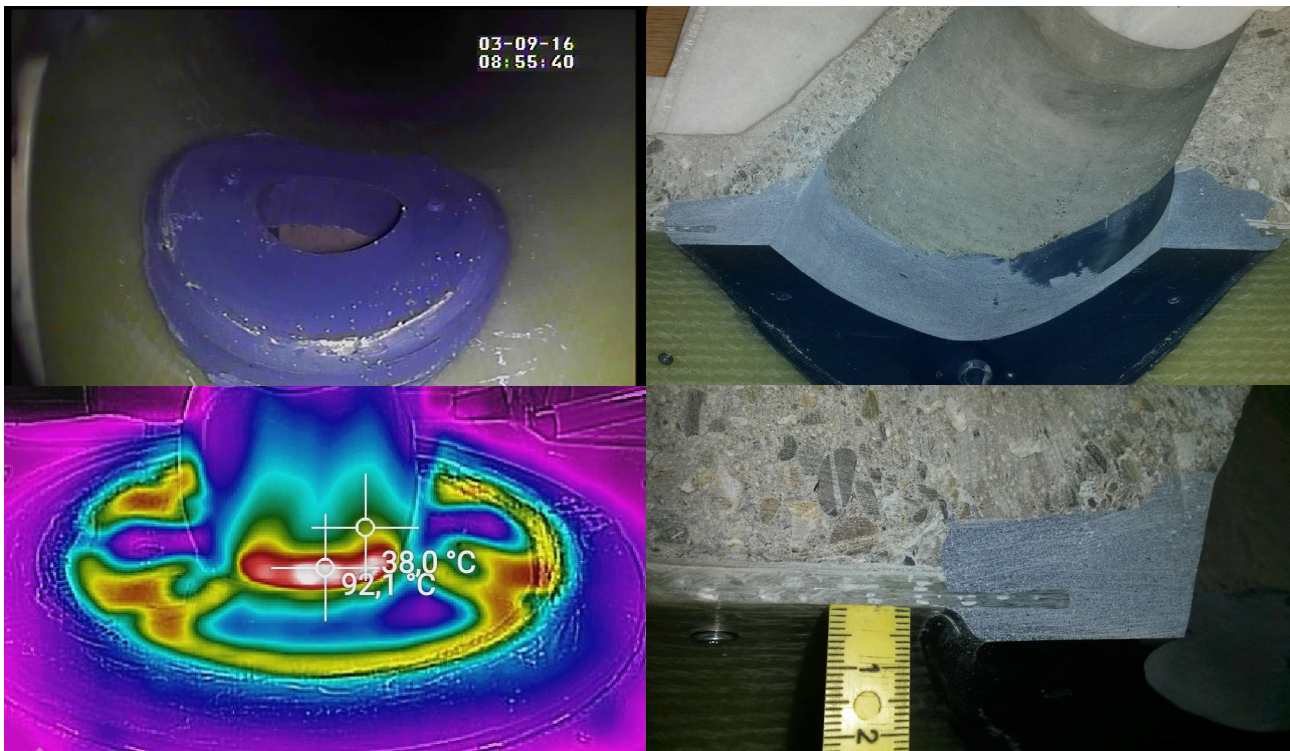
- Enormous time saving for every house connection
- Compatible with KA-TE SM300
- Heating shuttering without cables and robots
- Easy to operate: Heating switched on with magnet, LED lights up
- No time pressure regarding pot life compared to fast resins. Fast resins tend to crack and shrink.
- Rechargeable shuttering with over 1h heating time
- Temperature limited to 90 °C
- Epoxy eyes indicate sufficient resin quantity during grouting
- Sealing ring reduces thin resin runs behind the shuttering





Heating with familiar autonomy and reliability

The innovative KA-TE PowerShield-System enables controlled heating of an injection process while the robot continues to work. The supporting heat accelerates the chemical reaction in the resin. Several field tests have shown that the curing time is usually halved. A backside seal always ensures uniformly shaped connections, which can also be filled with more pressure. The fully filled cavity is indicated by the four filled epoxy eyes. The PowerShield-System offers new possibilities in the planning and execution of connection pipe renovations.



KA-TE PMO AG	KA-TE Service Deutschland GmbH
Steineggstrasse 32	Brennschinken 2A
8852 Altendorf	94116 Hutthurm
Schweiz	Deutschland
Tel: +41 55 415 58 58	Tel: +49 171-2815141
info@ka-te.ch	alfred.seidl@ka-te.ch